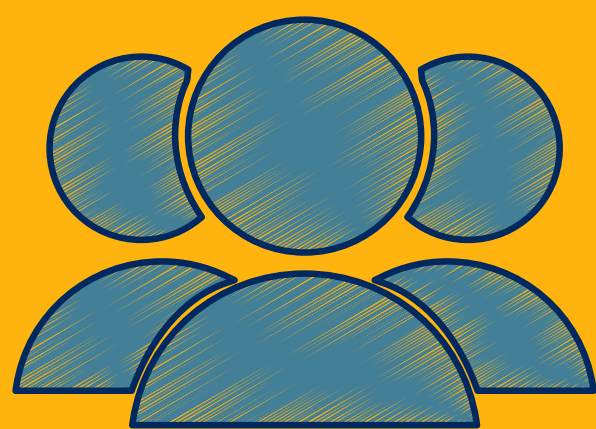


HOW CAN YOU INTEGRATE SEL INTO EVERYTHING YOU DO?

A national data set gathered from a diverse group of youth suggested that:

Strong developmental relationships **help young people feel more competent** in their social and emotional learning.



Social and emotional learning is enhanced when young people **experience their environments as equitable.**

The combination of strong developmental relationships and equitable environments **hold the most potential** for fostering social and emotional learning.



developmental relationships x equitable learning environment = SEL